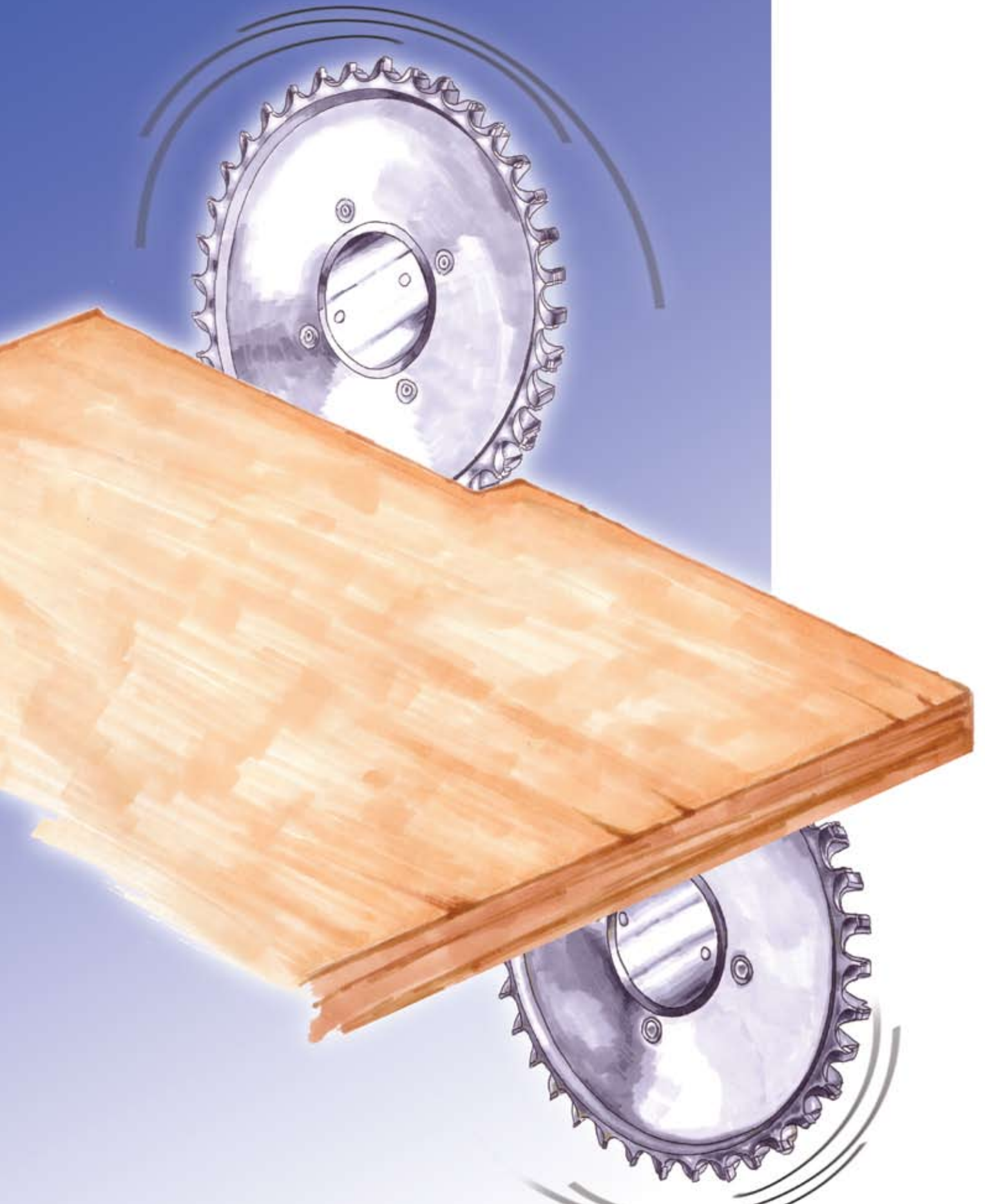


Hoggers

AKE
Cutting & better



Contents

Sawblades
Hoggers
Cutters with bore
Shank type cutters
Drills
Knives and plates
Clamping systems
Information

Compact hogger	
PLT compact hogger [2600].	72
Segment hogger	
Hogger with Fixmatic quick clamping system [0034].	73
Segment hogger	
Spare parts for segment hogger [0032/0033/0038].	74
Segment hogger	
Hogger with flange sleeve [0033].	75
Vario hogger	
Hogger with flange sleeve [0033/7033].	76
Vario hogger	
Spare sawblade [0032/0033/7032/7033].	77
Sawblade segment hogger	
Hogger with flange sleeve for Homag / Ima [0033].	78
Sawblade segment hogger	
Spare sawblade [0032/7032].	79
Sawblade segment hogger	
Spare sawblade [0032] und	
Spare segment [0452/0453] for hogger.	80
Scoring sawblade	
Scoring sawblade on flange sleeve [0030/0031/7030].	81
Scoring sawblade	
Scoring sawblade on Fixmatic quick clamping system [0038].	82
Scoring sawblade	
Spare scoring sawblade for AKE and other systems [0030].	83

Overview Hoggers

	PLT Compact Hogger 2600	Segment Hogger 0034	Segment Hogger 0033	Vario Hogger 0033	Saw Segment Hogger 0033
Application	For sizing of coated or uncoated, wood derived panels for high Quality furniture parts	For sizing of coated or uncoated, wood derived panels, when wide Hogging sections are needed	For sizing of coated or uncoated, wood derived panels	For sizing and Hogging of Solid wood and wood derived panels	For sizing of coated or uncoated, wood derived panels, when wide Hogging sections are needed
Machine	Double end tenoners with Standard or High precision Hydro motor	Double end tenoners	Double end tenoners	Multiple splitting saw machines Double end tenoners	Multiple splitting saw machines Double end tenoners
Cutting edge material	DP	TC	TC	TC / DP	TC / DP
Interface					
Flange sleeve	++	-	+	+	+
Hydro sleeve with Hexagon	+++	-			
Fixmatic Quick change	-	+			
Quick change system D 160	+	-			+
Quick change system D 190	+	-			
Application as Double Hogger	+++	-	+	-	+
Application as Scoring Hogging	+	+	+	+	+
Material					
OSB - Chipboard - MDF panel warm	-	+	+	-	++
OSB - panel	+++	+	+	+	++
Chipboard with loose core	+++	+	+	+	+
Chipboard, Melamine faced	+++	+	+	+	++
Chipboard, HPL faced	++	-	-	-	+
Chipboard, paper or foil coated	+++	-	-	-	-
Chipboard with veneer overhang length	+++ with Shredder cutters	-	-	-	+ with support plate
Chipboard with veneer overhang cross	++	++	++	++	++
Plywood panel with loose veneer overhang	-	-	-	-	+ with support plate
MDF panels coated or uncoated	++ without Hydro '+++ with Hydro	+	+	+	+
Solhsd wood length	++	-	-	++	+
Solhsd wood cross	++	-	-	++	++

Sawblades
Hoggers
Cutters with bore
Shank type cutters
Drills
Knives and plates
Clamping systems
Information

Compact hogger

PLT compact hogger [2600]



Application: For sizing panel material
 Material: Derived timber material, panels with and without coating. Excellent cutting Quality even in chip boards with low density core. Very high edge Quality with sensitive coatings such as foil, paper etc.
 Machine: Double-end profiler and edge bander
 Design: Improved chip removal due to optimised chip flow. Ideally suitable for machines with optimized suction hood. Reduced multiple chipping: Performance up to 25% higher with lower set-up costs
 Tooth: DP

PLT compact hogger. Suitable for hydro sleeve d=40 with hexagon

D mm	B mm	d mm	Z	R/L	Type	Order No.
250	10	80	24	lhs	26003901L	10039492
250	10	80	24	rhs	26003901R	10039491
250	10	80	36	lhs	26003902L	10039494
250	10	80	36	rhs	26003902R	10039493
250	10	80	48	lhs	26003903L	10039496
250	10	80	48	rhs	26003903R	10039495

PLT compact hogger. Suitable for flange sleeves d=35, DKW

D mm	B mm	d mm	Z	R/L	Type	Order No.
250	10	80	24	lhs	26004545L	10102832
250	10	80	24	rhs	26004545R	10102833
250	10	80	36	lhs	26004546L	10102834
250	10	80	36	rhs	26004546R	10102835
250	10	80	48	lhs	26004547L	10102836
250	10	80	48	rhs	26004547R	10102837

PLT compact hogger with bayonet fitting. Suitable for quick clamping system D 160 mm

D mm	B mm	d mm	Z	R/L	Type	Order No.
250	10	60	24	lhs	26004548L	10102838
250	10	60	24	rhs	26004548R	10102839
250	10	60	36	lhs	26004549L	10102840
250	10	60	36	rhs	26004549R	10102841
250	10	60	48	lhs	26004550L	10102842
250	10	60	48	rhs	26004550R	10102843

For sleeves see the chapter „Clamping elements“.

Also available for quick clamping system D 192

Sawblades

Hoggers

Cutters with bore

Shank type cutters

Drills

Knives and plates

Clamping systems

Information

Segment hogger

Hogger with Fixmatic quick clamping system [0034]



Application: For sizing panel material
 Material: Derived timber material - panels with or without coating
 Machine: Double-end profiler and edge bander
 Design: Hogger with steel body with inserted carbide-tipped segments with carbide tipped sawblade, flat teeth. Mounted to the Fixmatic quick clamping system.
 Tooth: TC, DP on demand



D mm	B mm	d mm	Z	R/L	Type	Order No.
205	20	35 DKN	44/ 12	lhs	003420035	10008235
205	20	35 DKN	44/ 12	rhs	003420036	10008236
205	20	40 6kt.	44/ 12	lhs	003420040	10008237
205	20	40 6kt.	44/ 12	rhs	003420041	10008238
205	20	40 DKN	44/ 12	lhs	003420042	10008239
205	20	40 DKN	44/ 12	rhs	003420043	10008240
205	20	35 DKN	60/ 12	lhs	003420135	10008241
205	20	35 DKN	60/ 12	rhs	003420136	10008242
205	20	40 6kt.	60/ 12	lhs	003420140	10008243
205	20	40 6kt.	60/ 12	rhs	003420141	10008244
205	20	40 DKN	60/ 12	lhs	003420142	10008245
205	20	40 DKN	60/ 12	rhs	003420143	10008246
255	20	35 DKN	48/ 18	lhs	003425035	10008251
255	20	35 DKN	48/ 18	rhs	003425036	10008252
255	20	40 6kt.	48/ 18	lhs	003425040	10008253
255	20	40 6kt.	48/ 18	rhs	003425041	10008254
255	20	40 DKN	48/ 18	lhs	003425042	10008255
255	20	40 DKN	48/ 18	rhs	003425043	10008256
255	20	35 DKN	60/ 18	lhs	003425135	10008257
255	20	35 DKN	60/ 18	rhs	003425136	10008258
255	20	40 6kt.	60/ 18	lhs	003425140	10008259
255	20	40 6kt.	60/ 18	rhs	003425141	10008260
255	20	40 DKN	60/ 18	lhs	003425142	10008261
255	20	40 DKN	60/ 18	rhs	003425143	10008262

Spare hogger with carbide-tipped sawblade. Suitable for Fixmatic quick clamping system

Sawblades
Hoggers
Cutters with bore
Shank type cutters
Drills
Knives and plates
Clamping systems
Information

Segment hogger

Spare parts for segment hogger [0032/0033/0038]



Spare carbide-tipped sawblade (flat Tooth). Suitable for segment hogger

D mm	B mm	b mm	d mm	Pin hole mm	Z	R/L	Type	Order No.
205	4	2,8	80	4/9/140	44F	lhs	003220101	10000113
205	4	2,8	80	4/9/140	44F	rhs	003220201	10000120
205	4	2,8	80	4/9/140	60F	lhs	003220301	10000125
205	4	2,8	80	4/9/140	60F	rhs	003220401	10000132
255	4	2,8	80	6/9/190	48F	lhs	003225102	10000168
255	4	2,8	80	6/9/190	48F	rhs	003225202	10000174
255	4	2,8	80	6/9/190	60F	lhs	003225302	10000175
255	4	2,8	80	6/9/190	60F	rhs	003225402	10001477
255	4	2,8	100	6/9/190	48F	lhs	003225501	10001478
255	4	2,8	100	6/9/190	48F	rhs	003225502	10001479
255	4	2,8	100	6/9/190	60F	lhs	003225503	10001480
255	4	2,8	100	6/9/190	60F	rhs	003225504	10001481

Spare Fixmatic quick clamping system

D mm		d mm	Type	Order No.
147	for hogger D=200	35 DKN	003814737	10017693
147	for hogger D=200	40 DKN	003814744	10017695
147	for hogger D=200	40 6kt.	003814745	10017696
192	for hogger D=250	35 DKN	003819237	10017688
192	for hogger D=250	40 DKN	003819244	10017689
192	for hogger D=250	40 6kt.	003819245	10017692

Spare segments and screws

	Type	Order No.
Segment with thread bolt. 1 pack. = 12 pcs.	003301201	10007646
Segment with thread bolt Z1. 1 pack. = 12 pcs.	003301400	10007652
Thread bolt 1 pack. = 24 pcs.	003302402	10007664
Screws (Torx) M5x12 SK9 for sawblade 1 pack. = 50 pcs.	003105001	40013528
Screws (Torx) M5x12 SK10 for sawblade 1 pack. = 50 pcs.	003105002	10106212

Segment hogger

Hogger with flange sleeve [0033]



Application: For sizing panel material
 Material: Derived timber material, panels with or without coating
 Machine: Double-end profiler and edge bander
 Design: Hogger with steel body with inserted carbide-tipped segments with carbide tipped sawblade, flat teeth. Mounted to the Fixmatic quick clamping system.
 Tooth: TC DP on demand



D mm	B mm	d mm	Z	R/L	Type	Order No.
205/ 200	20	35 DKN	44/ 12	lhs	003320031	10007681
205/ 200	20	35 DKN	44/ 12	rhs	003320001	10007672
205/ 200	40	35 DKN	44/ 24	lhs	003320032	10007682
205/ 200	40	35 DKN	44/ 24	rhs	003320002	10007673
205/ 200	60	35 DKN	44/ 36	lhs	003320033	10007683
205/ 200	60	35 DKN	44/ 36	rhs	003320003	10007674
205/ 200	20	35 DKN	60/ 12	lhs	003320041	10007684
205/ 200	20	35 DKN	60/ 12	rhs	003320010	10007677
205/ 200	40	35 DKN	60/ 24	lhs	003320042	10007685
205/ 200	40	35 DKN	60/ 24	rhs	003320012	10007678
205/ 200	60	35 DKN	60/ 36	lhs	003320043	10007686
205/ 200	60	35 DKN	60/ 36	rhs	003320013	10007679
255/ 250	20	35 DKN	48/ 18	lhs	003325031	10007947
255/ 250	20	35 DKN	48/ 18	rhs	003325001	10007941
255/ 250	40	35 DKN	48/ 36	lhs	003325032	10007948
255/ 250	40	35 DKN	48/ 36	rhs	003325002	10007942
255/ 250	60	35 DKN	48/ 54	lhs	003325033	10007949
255/ 250	60	35 DKN	48/ 54	rhs	003325003	10007943
255/ 250	20	35 DKN	60/ 18	lhs	003325041	10007950
255/ 250	20	35 DKN	60/ 18	rhs	003325010	10007944
255/ 250	40	35 DKN	60/ 36	lhs	003325042	10007951
255/ 250	40	35 DKN	60/ 36	rhs	003325012	10007945
255/ 250	60	35 DKN	60/ 54	lhs	003325043	10007952
255/ 250	60	35 DKN	60/ 54	rhs	003325013	10007946

Spare flange sleeve. Suitable for segment hogger, vario hogger and sawblade segment hogger

D mm	d mm	for hogger with bore mm	Type	Order No.
115	35 DKN	80	003300002	10041444
115	40 DKN	80	003300001	10007639

For Spare parts please see segment hogger with Fixmatic quick clamping system

Sawblades
Hoggers
Cutters with bore
Shank type cutters
Drills
Knives and plates
Clamping systems
Information

Vario hogger

Hogger with flange sleeve [0033/7033]



Application: For sizing of derived timber material on multi-rip saw without flange sleeve
Material: Solid wood, derived timber material with or without coating
Machine: Double-end profiler, multi-rip machines
Design: Hogger with steel body. Sawblade with axial angle for improved chip removal
Tooth: TC, DP

D mm	B mm	d mm	Z	Quality	R/L	Type	Order No.
255	14,4	35	48/ 12/ 6	DP	lhs	703325681	10111946
255	14,4	35	48/ 12/ 6	DP	rhs	703325680	10111947
255	14,4	40	48/ 12/ 6	TC	lhs	003325781	10111958
255	14,4	40	48/ 12/ 6	TC	rhs	003325780	10111962
255	14,4	40	48/ 12/ 6	DP	lhs	703325881	10111965
255	14,4	40	48/ 12/ 6	DP	rhs	703325880	10111967
255	14,4	35	48/ 12/ 6	TC	lhs	003325581	10031372
255	14,4	35	48/ 12/ 6	TC	rhs	003325580	10031373
255	14,4	35	60/ 12/ 6	DP	lhs	703325683	10111948
255	14,4	35	60/ 12/ 6	DP	rhs	703325682	10111949
255	14,4	40	60/ 12/ 6	TC	lhs	003325783	10111963
255	14,4	40	60/ 12/ 6	TC	rhs	003325782	10111964
255	14,4	40	60/ 12/ 6	DP	lhs	703325883	10111968
255	14,4	40	60/ 12/ 6	DP	rhs	703325882	10111969
255	14,4	35	60/ 12/ 6	TC	lhs	003325583	10031374
255	14,4	35	60/ 12/ 6	TC	rhs	003325582	10031375

Sawblades
Hoggers
Cutters with bore
Shank type cutters
Drills
Knives and plates
Clamping systems
Information

Vario hogger

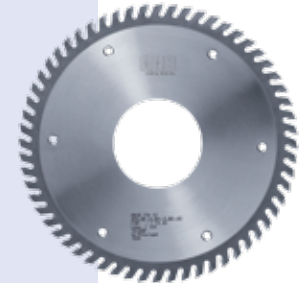
Spare sawblade [0032/0033/7032/7033]

TC spare sawblade, one-side acute with axial angle. Suitable for vario hogger with a flange sleeve

D mm	B mm	b mm	d mm	Z	R/L	Type	Order No.
250	5,5	5	30	12F	lhs	003325081	10029264
250	5,5	5	30	12F	rhs	003325082	10029282
255	7	5	30	6F	lhs	003325585	10029259
255	7	5	30	6F	rhs	003325584	10029280
255	4	2,8	30	48E	lhs	003225581	10029263
255	4	2,8	30	48E	rhs	003225580	10029281
255	4	2,8	30	60E	lhs	003225583	10029262
255	4	2,8	30	60E	rhs	003225582	10029279

DP spare sawblade, one-side acute with axial angle. Suitable for vario hogger with a flange sleeve

D mm	B mm	b mm	d mm	Z	R/L	Type	Order No.
250	5,5	5,00	80	12F	lhs	703325081	10112203
250	5,5	5,00	80	12F	rhs	703325082	10112204
255	6	5,00	80	12/ 6F	lhs	703325583	10112205
255	6	5,00	80	12/ 6F	rhs	703325584	10112206
255	4,3	2,80	80	36F	lhs	703225587	10112197
255	4,3	2,80	80	36F	rhs	703225586	10112198
255	4,3	2,80	80	48F	lhs	703225581	10112199
255	4,3	2,80	80	48F	rhs	703225582	10112200
255	4,3	2,80	80	60F	lhs	703225583	10112201
255	4,3	2,80	80	60F	rhs	703225584	10112202
260	5	4,00	80	12/ 6F	lhs	703326085	10112207
260	5	4,00	80	12/ 6F	rhs	703326086	10112208



Sawblades

Hoggers

Cutters with bore

Shank type cutters

Drills

Knives and plates

Clamping systems

Information

Sawblade segment hogger

Hogger with flange sleeve for Homag / Ima: Basic [0032]



Application: Sizing with scoring / hogging and double-hogging
 Material: Derived timber material - panels with or without coating
 Machine: Double-end profiler and edge bander
 Design: Hogger with steel body and reversible saw segments. Segments with axial angle for optimized chip removal
 Sizing with scoring/ hogging or double-hogging
 Tooth: TC



D mm	B mm	d mm	Z	R/L	Type	Order No.
250	18	35 DKN	48F+ 6x4	lhs	003325131	10029822
250	18	35 DKN	48F+ 6x4	rhs	003325101	10007953
250	18	40 DKN	48F+ 6x4	lhs	003325241	10112006
250	18	40 DKN	48F+ 6x4	rhs	003325210	10112007
250	18	35 DKN	72F+ 6x4	lhs	003325141	10029823
250	18	35 DKN	72F+ 6x4	rhs	003325110	10007962
250	18	40 DKN	72F+ 6x4	lhs	003325341	10112010
250	18	40 DKN	72F+ 6x4	rhs	003325310	10112011

Built-up hogger applied to increase the kerf to 36 mm by means of TC segments

D mm	B mm	d mm	Z	R/L	Type	Order No.
250	18	80	6x4	lhs	003324900	10112012
250	18	80	6x4	rhs	003324901	10112013

With bayonet fitting for quick clamping system D 160 mm. With TC sawblade and TC segments

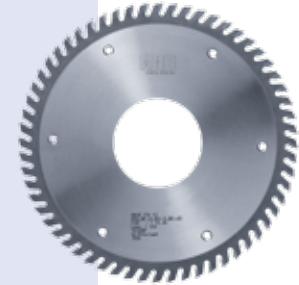
D mm	B mm	d mm	Z	R/L	Type	Order No.
250	18	60	48F+ 6x4	lhs	003324902	10112014
250	18	60	48F+ 6x4	rhs	003324903	10112015
250	18	60	72F+ 6x4	lhs	003324906	10112018
250	18	60	72F+ 6x4	rhs	003324907	10112019

With bayonet fitting for Fix Matic quick clamping system D 192 mm. With TC sawblade and TC segments (flat tooth)

D mm	B mm	d mm	Z	R/L	Type	Order No.
250	18	80	48F+ 6x4	lhs	003324920	10112014
250	18	80	48F+ 6x4	rhs	003324921	10112022
250	18	80	72F+ 6x4	lhs	003324924	10112025
250	18	80	72F+ 6x4	rhs	003324925	10112026

Sawblade segment hogger

Spare sawblade [0032/7032]



TC spare sawblades. Suitable for system of AKE and Leuco

D mm	B mm	b mm	d mm	Pin hole mm	Z	R/L	Type	Order No.
200	4	2,8	80	4/10/100	40F	lhs	003220140	10000116
200	4	2,8	80	4/10/100	40F	rhs	003220240	10000123
200	4	2,8	80	4/10/100	60F	lhs	003220340	10000127
200	4	2,8	80	4/10/100	60F	rhs	003220440	10000134
220	4	2,8	80	6/10/154	60F*	lhs	003222141	10000154
220	4	2,8	80	6/10/154	60F*	rhs	003222241	10000157
250	4	2,8	80	6/10/200	48F	lhs	003225008	10000162
250	4	2,8	80	6/10/200	48F	rhs	003225009	10000163
250	4	2,8	80	6/10/200	72F	lhs	003225080	10013458
250	4	2,8	80	6/10/200	72F	rhs	003225180	10013471
250	4	2,8	100	6/10/200	78F	lhs	003225110	10000171
250	4	2,8	100	6/10/200	78F	rhs	003225010	10000165
255	4	2,8	100	6/10/200	54F	lhs	003225541	10001482
255	4	2,8	100	6/10/200	54F	rhs	003225641	10001483
255	4	2,8	80	6/10/200	60F	lhs	003225741	10012901
255	4	2,8	80	6/10/200	60F	rhs	003225841	10001485

*with axial angle

DP spare sawblades with axial angle. Suitable for sawblade segment hogger

D mm	B mm	b mm	d mm	Pin hole mm	Z	R/L	Type	Order No.
250	4	2,8	80	6/10/200	36F	lhs	703225007	10112223
250	4	2,8	80	6/10/200	36F	rhs	703225008	10112224
250	4	2,8	80	6/10/200	48F	lhs	703225009	20007702
250	4	2,8	80	6/10/200	48F	rhs	703225011	20002539
250	4	2,8	80	6/10/200	60F	lhs	703225021	10112226
250	4	2,8	80	6/10/200	60F	rhs	703225022	10112227
250	4	2,8	80	6/10/200	72F	lhs	703225023	10112209
250	4	2,8	80	6/10/200	72F	rhs	703225024	10112210

For spare sleeve please see segment hoggers

Sawblades

Hoggers

Cutters with bore

Shank type cutters

Drills

Knives and plates

Clamping systems

Information

Sawblade segment hogger

Spare sawblade [0032] and
Spare segment [0452/0453] for hogger



TC spare sawblades. Without pinholes and segment gaps.

For fitting on individual hogger body, hogger type and brand must be specified

D mm	B mm	b mm	d mm	Z	Type	Order No.
205	4	2,8	80	44F	003220200	10000118
205	4	2,8	80	60F	003220400	10000131
210	4	2,8	80	44F	003221200	10000141
210	4	2,8	80	60F	003221400	10000149
<input type="checkbox"/> 250	4	2,8	80	78F	003225000	10000160
255	4	2,8	80	48F	003225200	10000172
255	4	2,8	80	60F	003225400	10000177
260	4	2,8	80	48F	003226600	10001498
<input type="checkbox"/> 260	4	2,8	80	60F	003226800	10001501
260	4	2,8	80	72F	003226010	10001492



TC spare segments for the system of AKE* / Leuco

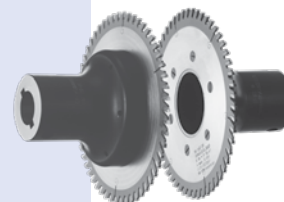
D mm	Z	R/L	Type	Order No.
200	4		045200004	10008892*
200/250	4 w. axial angle	lhs	045200204	10113184
200/250	4 w. axial angle	rhs	045200104	10113183
250	4K	lhs	045201204	10113186
250	4K	rhs	045201104	10113185
300	8	lhs	045300208	10008912
300	8	rhs	045300108	10008908
300	10	lhs	045300220	10008914
300	10	rhs	045300120	10008910
350/430	8	lhs	045350208	10008919
350/430	8	rhs	045350108	10008916
350/430	10	lhs	045350210	10008920
350/430	10	rhs	045350110	10008917

Scoring sawblade

Scoring sawblade on flange sleeve [0030/0031/7030]



Application: Scoring with the feed in order to produce clean edges without chipping
 Material: Derived timber material - panels with or without coating
 Machine: Double-end profiler and edge bander
 Design: Scoring sawblade. Mounted on sleeve for Homag, IMA, Torwegge
 Tooth:: TC



D mm	B mm	b mm	d mm	Z	R/L	Type	Order No.
180	3,2	2,2	30 DKN	42F	lhs	003175114	10001473
180	3,2	2,2	30 DKN	42F	rhs	003175115	10001474
180	3,2	2,2	30 DKN	54F	lhs	003175014	10001471
180	3,2	2,2	30 DKN	54F	rhs	003175015	10001472

TC or DP tipped spare sawblade. DP tip height 5 mm. Suitable for scoring sawblade with flange sleeve

D mm	B mm	b mm	d mm	Z	Quality	R/L	Type	Order No.
180	3,2	2,2	65	36F	DP	lhs	703018010	10112284
180	3,2	2,2	65	36F	DP	rhs	703018011	10112286
180	3,2	2,2	65	42F	TC	lhs	003018008	10000265
180	3,2	2,2	65	42F	TC	rhs	003018009	10000267
180	3,2	2,2	65	42F	DP	lhs	703018008	10112149
180	3,2	2,2	65	42F	DP	rhs	703018009	10112150
180	3,2	2,2	65	48F	DP	lhs	703018006	10112274
180	3,2	2,2	65	48F	DP	rhs	703018007	10112281
180	3,2	2,2	65	54F	TC	lhs	003018006	10000261
180	3,2	2,2	65	54F	TC	rhs	003018007	10000263

Spare flange sleeve, suitable for scoring sawblade

D mm	d mm	for scoring sawblade with bore	Type	Order No.
108	30 DKN	65 mm	003100014	10000078

Spare screws

	Type	Order No.
Screws (Torx) M5x12 SK9 for sawblade 1 pack. = 50 pcs.	003105001	40013528
Screws (Torx) M5x12 SK10 for sawblade 1 pack. = 50 pcs.	003105002	10106212

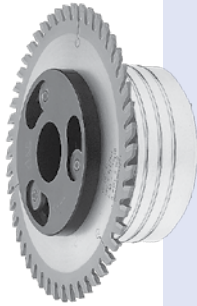
Sawblades
Hoggers
Cutters with bore
Shank type cutters
Drills
Knives and plates
Clamping systems
Information

Scoring sawblade

Scoring sawblade on Fixmatic quick clamping system [0038]



Application: Scoring with the feed in order to produce clean edges without chipping
 Material: Derived timber material - panels with or without coating
 Design: Scoring sawblade, suitable for clamping flange and Fixmatic quick-clamping system
 Tooth:: TC



D mm	B mm	b mm	d mm	Z	R/L	Type	Order No.
180	3,2	2,2	30 DKN	30F	lhs	003818031	10008677
180	3,2	2,2	30 DKN	30F	rhs	003818032	10008678
180	3,2	2,2	40 6kt.	30F	lhs	003818040	10008679
180	3,2	2,2	40 6kt.	30F	rhs	003818041	10008680
180	3,2	2,2	30 DKN	42F	lhs	003818131	10008703
180	3,2	2,2	30 DKN	42F	rhs	003818132	10008704
180	3,2	2,2	40 6kt.	42F	lhs	003818140	10008705
180	3,2	2,2	40 6kt.	42F	rhs	003818141	10008706
180	3,2	2,2	30 DKN	54F	lhs	003818231	10008729
180	3,2	2,2	30 DKN	54F	rhs	003818232	10008730
180	3,2	2,2	40 6kt.	54F	lhs	003818240	10008731
180	3,2	2,2	40 6kt.	54F	rhs	003818241	10008732
200	3,2	2,2	30 DKN	48F	lhs	003820031	10008747
200	3,2	2,2	30 DKN	48F	rhs	003820032	10008748
200	3,2	2,2	30 DKN	60F	lhs	003820131	10008771
200	3,2	2,2	30 DKN	60F	rhs	003820132	10013012

Spare Fixmatic quick clamping system. Suitable for scoring sawblade for Fixmatic quick clamping system

D mm	d mm	for scoring sawblade with bore mm	Type	Order No.
122	30 DKN	50	003812232	10017697
122	35 DKN	50	003812237	10017698
122	40 hex.	50	003812245	10017699

Spare clamping flange. Suitable for Fixmatic quick clamping system

D mm	for montage	R/L	Type	Order No.
122	between clamping flange (interior)	lhs	003800050	10008635
122	between clamping flange (interior)	rhs	003800150	10008643
122	before clamping flange (exterior)	lhs	003800051	10019682
122	before clamping flange (exterior)	rhs	003800151	10017798

Sawblades

Hoggers

Cutters with bore

Shank type cutters

Drills

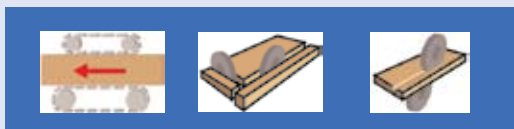
Knives and plates

Clamping systems

Information

Scoring sawblade

Spare scoring sawblade for AKE and other systems [0030]



Application: Scoring and sizing
 Material: Derived timber material - panels with or without coating
 Machine: Double-end profiler and edge bander
 Design: *= For AKE / Leuco quick clamping system
 Tooth:: TC



D mm	B mm	b mm	d mm	NL mm	Z	Type	Order No.
150	3,2	2,2	30		30F	003015030	10000251
150	3,2	2,2	30		48F	003015031	10000253
180	3,2	2,2	30		30F	003018034	10000271
180	3,2	2,2	50	3/22/80 + 3/6/80	30F	003018051	10000275 *
180	3,2	2,2	30		42F	003018033	10000269
180	3,2	2,2	50	3/22/80 + 3/6/80	42F	003018050	10000273 *
180	3,2	2,2	30		54F	003018031	10000268
180	3,2	2,2	50	3/22/80 + 3/6/80	54F	003018052	10000276 *
200	3,2	2,2	30		36F	003020030	10000281
200	3,2	2,2	30		48F	003020031	10000282
200	3,2	2,2	50	3/22/80 + 3/6/80	48F	003020051	10000286 *
200	3,2	2,2	30		60F	003020033	10000284
200	3,2	2,2	50	3/22/80 + 3/6/80	60F	003020053	10000287 *
255	3,2	2,2	30		60F	003025531	10000289
305	3,2	2,2	30		54F	003030531	10000073
305	3,2	2,2	30		72F	003030533	10000074
355	4,4	3	30		72F	003035530	10023388

Sawblades
Hoggers
Cutters with bore
Shank type cutters
Drills
Knives and plates
Clamping systems
Information